

# MFPD

## Progressing With Metals



**DRIVES BUSINESS**



**ROLL FORMED  
SECTIONS**



**PRECISION PARTS**



**LARGE MECHANICAL  
SECTIONS**

## MURUGAPPA GROUP OF COMPANIES

One of India's top corporate conglomerates, the INR 742 billion Murugappa Group was established in 1900.

Carborundum Universal Ltd., GG Power and Industrial Solutions Ltd., Cholamandalam Financial Holdings Ltd., Cholamandalam Investment and Finance Company Ltd., Cholamandalam MS General Insurance Company Ltd., Coromandel International Ltd., Coromandel Engineering Company Ltd., E.I.D. Parry (India) Ltd., Parry Agro Industries Ltd., Shanthy Gears Ltd., Tube Investments of India Ltd., and Wendt (India) Ltd. are some of the major companies in the Group, which has its headquarters located in Chennai.

Abrasives, Technical Ceramics, Electro Minerals, Auto Components & Systems, Bicycles, Fertilizers, Sugar, Tea, and Spirulina (Nutraceuticals) are just a few of the product lines in which the Group is a leader. The Group has established robust partnerships with prominent global corporations, including Compagnie Des Phosphat De Gafsa (CPG), Morgan Advanced Materials, Foskor, Mitsui Sumitomo, Yanmar & Co., and Groupe Chimique Tunisien. The Group is widely distributed over six continents and all of India. The Murugappa stable is home to well-known brands like BSA, Hercules, Montra, Mach City, Ballmaster, Ajax, Parry's, Chola, Gromor, Shanthy Gears, and Paramfos.



### Led by ethics. Guided by vision

Progressively grow with power transmission, precision, and formed parts in the B2B & B2C Space



**Since  
1900**



**\$ 5.5 Bn**  
Consolidated Turnover



**\$ 9.5+ Bn**  
Group Market Cap



**3**  
Sectors



**29**  
Businesses



**10**  
Listed Companies



**Office in 18**  
Countries



**90+**  
Manufacturing Locations



**73,000+**  
Workforce (No.s)

## FIVE LIGHTS

### Staying true. Staying Successful.

At the core of the Group's Day to day functioning, the Five Lights help us define 'who am I', 'how do I work' and 'how do I relate to my environment'.

It is a living, breathing example of how values can evolve and guide organizations across eras.

### The Spirit of the Murugappa Group



## TUBE INVESTMENTS OF INDIA LIMITED (TII)

One of India's leading engineering companies, TII manufactures tubes, metal formed products, chains and cycles. A preferred supplier for the automotive industry, TII also has the distinction of pioneering cycle retailing in India, with prestigious brands like BSA, Hercules, Ladybird, Roadeo, Montra, Montra Electric and Mach City in its staple.



### Vision with Action

Build a globally admired Indian engineering company creating stakeholder delight

### Highlights

- Largest manufacturer of precision tubes in India
- 2nd largest bicycle producer in India with 4 million cycles per year; market leader in the 'specials' segment
- Every Second Passenger Car and Motor cycle in India has TII's Safety critical and precision products.
- Major share of business with Car door frames for M/s Hyundai
- 2nd largest producer of transmission chains in India
- Preferred and one of the largest precision products manufacturer in the country.



### Metal Formed Products Division (MFPD)

Drive and cam chains for two-wheelers, fine blanked precision components, high strength roll formed components and stainless steel coach

### Tube Products of India (TPI)

Precision Tubes, Electric Resistance Welded (ERW) and Cold Drawn Welded (CDW)

### TI Cycles of Indi (TICI)

Cycles, Cycle Components, Fitness Equipment and Accessories

### Industrial Division (ID)

Worm Gearboxes, Helicals, Gears & Pinions and Gear Servicing  
Chains for Industrial Applications, Engineering Class Chains

### Subsidiaries

TI Clean Mobility  
CG Power  
TI Medical  
TI Optical (TIOS)



# MFPD- Excellence, You Can Count On

MFPD Comprises distinct business units mainly catering to Automotive, Industrial and Heavy fabrication applications.

Few manufacturers worldwide can compete with the volume of power transmission, precision, and formed parts that MFPD @ TII produces today. We offer wide range of automotive parts comprising of timing chains, drives chains, precision fine blanked parts and roll-formed door frames for the passenger and commercial vehicle segments.

MFPD  
CAPABILITY

## PASSION FOR PRECISION

Ability to design, manufacture and service tooling with precision benchmarked to Global Standards.

Proven Track record of production and service of several safety critical Products



## THE MATERIAL EDGE

leveraging wide range of cold rolled steel strips (CRSS) with thickness of 0.3mm to 8mm. Offering a comprehensive product range in terms of dimensions and grades.



## METAL FORMING SYSTEMS

Expertise in manufacture and supply of wide range of metal shapes using metal forming process like roll forming, Stretch bending, deep drawing and bulk forming techniques.



## METAL JOINING TECHNOLOGY

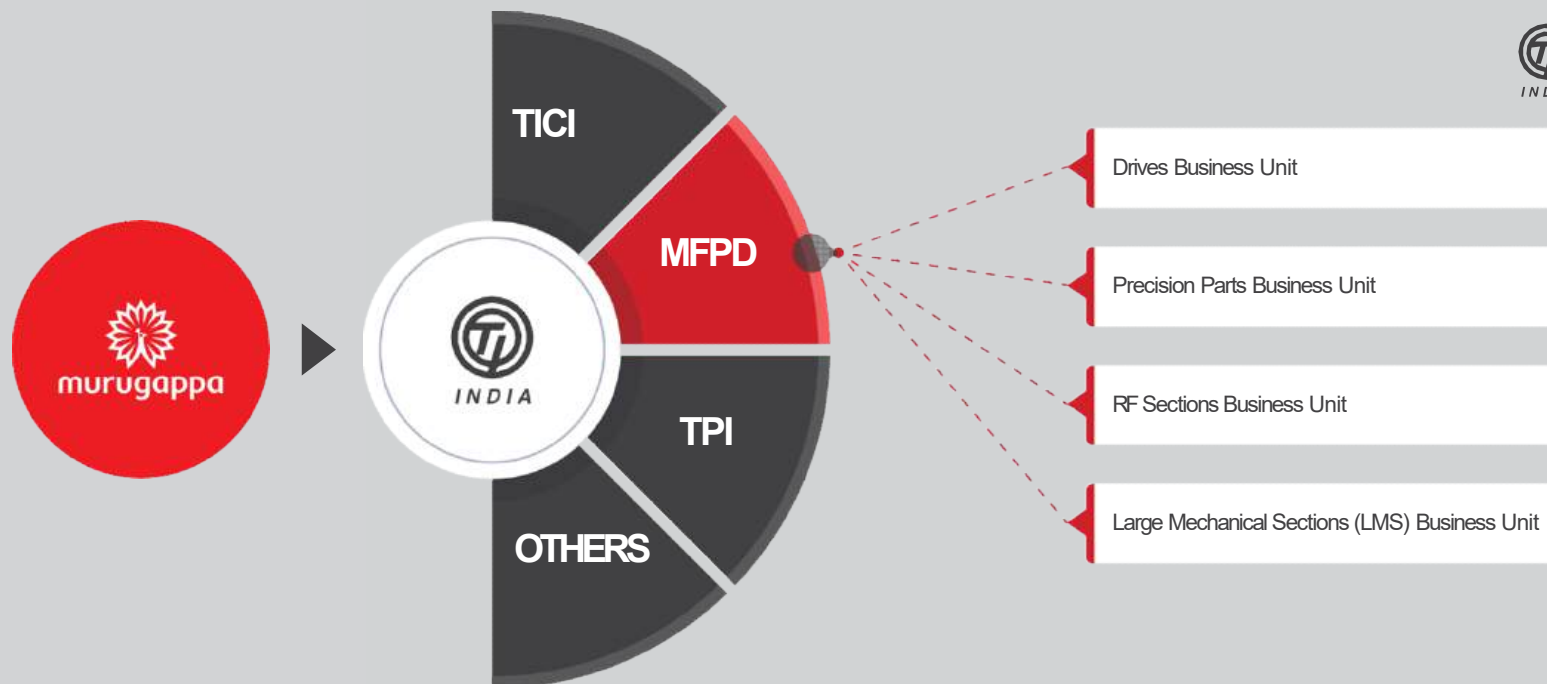
Ability to Join Metals using Laser , MIG ,TIG and Spot welding technology.



## HIGH SPEED METAL BLANKING

Expertise in design and manufacturing of high speed precision blanking tools. Ability of Mass production of high volume precision parts with automatic assembly capabilities.





#### HEAT TREATMENT FACILITY

The continuous and batch type furnace facilities for carburizing, carbonitriding and Austempering enable to produce parts with optimum case depth, minimum distortion resulting in superior performance and life.



#### METROLOGY & MEALLURGICAL LAB

A centralized metrology lab equipped with 2D Scanner & CMM, profile projector, contour tracer, micro hardness tester, spectrophotometer carbon determinator for microscopic analysis and material testing.



#### ESG MANAGEMENT

Through continual improvement and innovation, we aim to minimize our environmental footprint, promote diversity and inclusion, uphold human rights, and maintain high standards of governance



#### IN-HOUSE TOOL DESIGN

Centralized tool room to make high precision blanking and forming tools. Ability to service, Maintain and re-furbish tools ensuring consistent tool performance.



#### PLASTIC INJECTION MOLDING

Automated Plastic injection Molding machine integrated with robotics.



#### VALUE ENGINEERING

A Competent Engineering team well equipped with talent and skills for design and analysis to deliver value proposition and ability to collaborate with customers right from design stage.





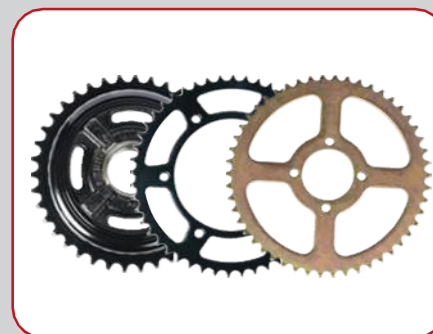


## **Drives Business Unit**

Chains that endure,  
Rides secure



Chain Sprocket Kit  
Drive Chains  
Timing Chains  
Sprockets

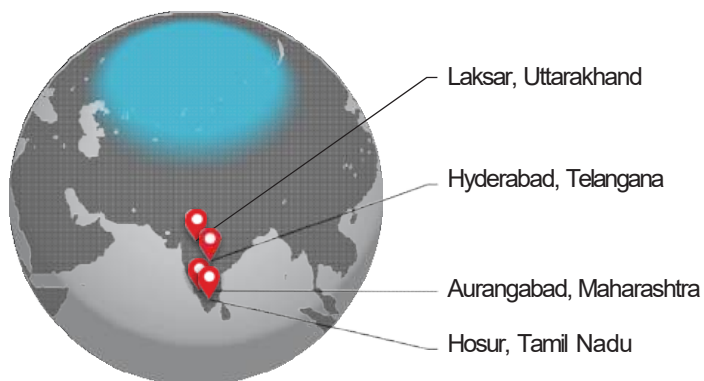


## CORE CAPABILITIES



Change good photograph

### State-of-the-art Manufacturing Facilities



The manufacturing facilities are strategically positioned near our OEM customers, ensuring timely deliveries that cater to the Just-In-Time (JIT) demands of our valued partners.

## Experience the power of quality and precision in motion.

At Auto Chains, we're proud to be a leader in 2Wheeler power transmission systems. Our vision is to be a world-class player in this industry.



### The Trusted Brand: DIAMOND & ROMBO

With the strong brand DIAMOND & ROMBO, we serve domestic and global customers, ensuring that our products meet the diverse needs around the world.



### Monthly Production Capacity

With a annual production capacity of 11 million feet of chains, per month, we ensure timely and reliable deliveries to meet customer demands.



### Production Facility

World-class high speed presses, Bush Forming technology, Pin Cropping, Bush and roller Extrusion technologies coupled with automatic assembling of drive systems delivers high performance chain kits meeting Global Standards.



### Heat Treatment

With decades of experience in heat treatment processes, we utilize continuous furnace and batch type furnaces for carburizing, carbo-nitriding and through hardening of child parts of low carbon, medium carbon and alloy steels.



### Value-Addition & Testing

TIDC is well equipped with grinding and mass finishing technologies to deliver superior wear resistant surface morphology in chains. Patented coating processes are deployed to enhance product characteristics. Product performance is validated, tested and certified for fit and function through well established in-house Test facilities.

Tube Investments of India Ltd.

Unit : TIDC INDIA

Post Bag No. 11, C T H Road, Ambattur, Chennai – 600053.

Email: [Tiautochains@tii.murugappa.com](mailto:Tiautochains@tii.murugappa.com)

## Precision Parts Business Unit

Passion for precision



Power Transmission Parts  
Seat & Door Parts  
Recliner Mechanism Components  
Passive Safety Components





## CORE CAPABILITIES



### State-of-the-art Manufacturing Facilities



2 Plants in  
Chennai, Tamil Nadu

Warehouses are strategically positioned near our OEM customers, ensuring timely deliveries that cater to the Just-In-Time (JIT) demands of our valued partners.

## Precision, Quality, and Innovation

We are committed to delivering excellence in manufacturing. Our state-of-the-art facilities and cutting-edge Fine Blanking technology enables production of parts with repeatability and reproducibility meeting Global customer requirements



### Press Capacity

TIDC has world-class Fine Blanking Presses ranging from 250T upto 880T capacity. Ability to produce parts ranging between 2mm upto 16mm and with lengths ranging from 10mm till 400mm makes us unique. Special features of additional hydraulics gives us an edge to design tools with various integrated operations in tooling.



### Heat Treatment

With decades of experience in heat treatment processes, we utilize continuous furnace and batch type furnaces for Induction Hardening, carburizing, carbo-nitriding, hardening & tempering and Austempering. Established processes and facilities enables us to meet various customer specific metallurgical requirements.



### Value-Add Center

TIDC has acquired the skills and knowledge for value-added operations, including double disc grinding, rotary grinding, plasma arc welding, riveting, joining, assembling as per end product requirements.



### In-House Injection Molding

Molding is a critical process, and with our in-house molding facility, we've enhanced our capacity to meet global quality and delivery expectations. We have a fully automated injection molding machine in-house with robotics.



### Tooling Set Up

Our tooling setup includes the latest generation of CNC Wire EDMs, Spark Erosion Machine, Hi-speed VMC for hard milling operations on tooling parts.



Tube Investments of India Ltd.

Unit : TIDC INDIA

Post Bag No. 11, C T H Road, Ambattur, Chennai – 600053.

Email: [Tifineblanking@tii.murugappa.com](mailto:Tifineblanking@tii.murugappa.com)



## Roll Formed Sections Business Unit

Formed for the ride,  
Metal products with pride



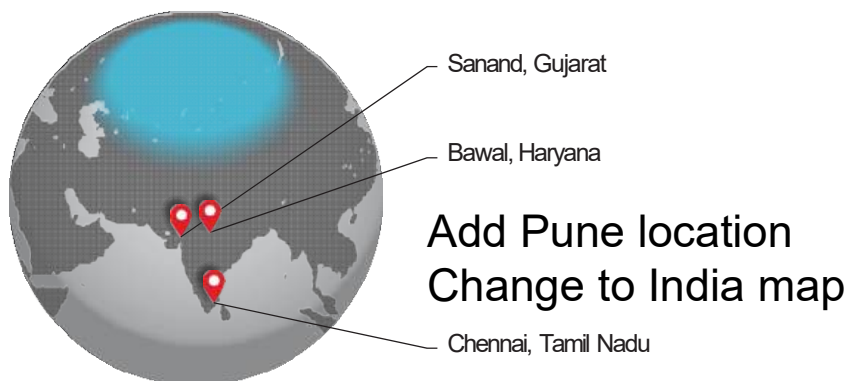
Car Door Frames  
Door Partition & Guide Channels  
Cowl Car Beams & Impact Beam  
Roll Formed Mudguards  
Various Types of Motor Casings



## CORE CAPABILITIES



### State-of-the-art Manufacturing Facilities



The manufacturing facilities are strategically positioned near our OEM customers, ensuring timely deliveries that cater to the Just-In-Time (JIT) demands of our valued partners.

### Discover Excellence in Manufacturing

TI Metal Forming, we take pride in our state-of-the-art manufacturing facilities located strategically in Chennai, Bawal, Pune and Sanand positioned near our OEM customers, ensuring timely deliveries that cater to the Just-In-Time (JIT) demands.



#### World-Class Roll Forming Technology

World-class rolling forming technology upto 68-stages utilized to manufacture precise and uniform cross sections. We take pride in offering the best-in-class roll forming technology, producing parts with close tolerances. With Multiple roll forming mills, we offer Precision and consistency with diverse product range with thickness ranging from 0.65mm upto 12mm.



#### Impressive Production Capacity

Annually, we produce a staggering 2.5 million door frames. This is a testament to our dedication to fulfilling the needs of our customers with high-quality products at scale. We boast a robust infrastructure with 6 Rafter mills and 5 Changeover mills. Rafter mills can roll up to 5 million meters per annum and changeover mills can roll up to 3.5 million meters per annum. This cutting-edge technology ensures precision, efficiency, and consistency in all our products.



#### Value Proposition for Class – A Parts

Dedicated Value add cells focused on customer delivery with value add operations supported by Stamping, Stretch Bending, Saw Cutting, CMT, MIG & MAG, Resistance Projection welding and finishing operations such as grinding and buffing automated to suit product lines meeting aesthetic requirements of customers.



#### Diverse Product Portfolio

We offer diverse range of Products like, Door Frames, Cowl Cross Beams, Impact Beams, Door partition Sashes, Glass Guide channels for PV segment

We offer Mudguards, Cover tubes, Yokes, Motor Casings and other related products for 2 Wheeler Industry segment.

Tube Investments of India Ltd.

Unit : TI METAL FORMING

Chennai Thiruvallur Hi Road, Thiruninravur, Chennai – 602024.

Email: [Timfauto@tii.murugappa.com](mailto:Timfauto@tii.murugappa.com)





## Large Mechanical Sections Business Unit

Unmatched quality,  
Coaches of royalty



Railway Coach  
SS Rolling Stock Points  
Doors  
Heavy Fabrication Parts

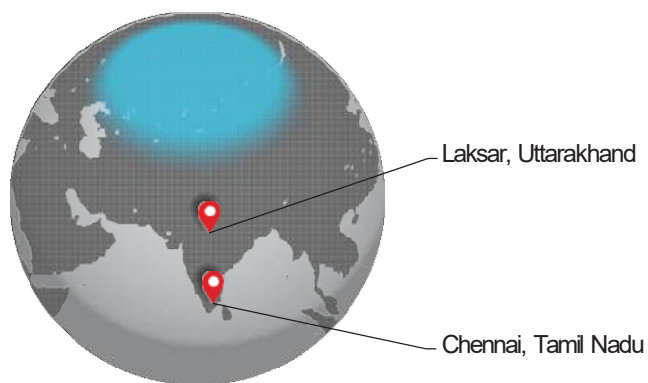




## CORE CAPABILITIES



### State-of-the-art Manufacturing Facilities



The manufacturing facilities are strategically positioned near our OEM customers, ensuring timely deliveries that cater to the Just-In-Time (JIT) demands of our valued partners.

## Precision Sheet Metal Components

TI Railways pioneer and leader in precision value added sheet metal formed products. Manufacturers and suppliers of Heavy engineering products catering to various industries including railways, Metro, construction and others.

### Capabilities for Side Wall, Roof, End Wall, Underframe for Railways

- Ability to Handle weight up to 20 metric tonnes
- Spot Welding Capacity: 1 million spots per annum
- Work Piece Length: Up to 23 meters
- Monthly Production: Minimum 20 -45 units

### Roll Forming Capability

- From 0.60 mm to 12mm thickness of stainless steel materials
- 1000 metric tons per month

### Cutting capability including Stainless Steel

- 2D Laser Cutting with capabilities of 2000 x 4000 x 10mm thickness
- 3D Laser Cutting with capability of 21000 x 5 mm thickness
- Plasma cutting of 2000 x 8000 x 25mm thickness

### Welding Capability including Stainless Steel

- Laser Welding
- Seam welding
- Spot welding
- TIG/MIG welding

### Exports

- Manufactured and supplied more than 200 coach sets of complete Sidewall, Roof & End wall for Global requirement.

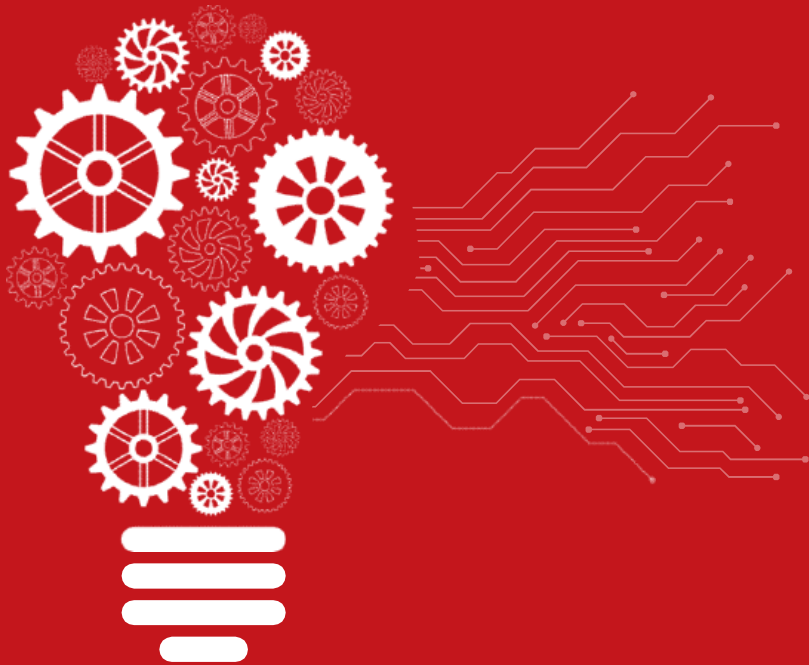
Tube Investments of India Ltd.

Unit : TI METAL FORMING - RAILWAYS

Chennai Thiruvallur Hi Road, Thiruninravur, Chennai – 602024.

Email: [Timfrail@tii.murugappa.com](mailto:Timfrail@tii.murugappa.com)

## Corporate Technology Center



TII's pursuit of engineering excellence has always been backed by robust R&D initiatives. To meet the ever increasing demand from industry for next generation materials, products and processes, the technology center was established to keep Tube Investments of India ahead of the curve.

Strength of CTC is in areas of product and process engineering, design and CAE capabilities, developing internal test standards and research oriented projects. Corporate technology center also works on business driven R&D projects with specific focus on "metal forming", "thermal processing" technologies and "product design". TII continuously works with reputed Computer Aided Engineering (CAE) firms to benchmark its solutions.



**Basic  
Laboratory**



**Advanced  
Material  
Laboratory**



 CATIA

 SOLIDWORKS

 Ansys

 ALTAIR

 AutoCAD

 LS-DYNA

 COPRA  
a data Brand

# SUSTAINABILITY



The Company seeks to improve its environmental performance by adopting cleaner production methods, promotion of energy efficient and environmentally friendly technologies. Suitable processes and systems are developed with contingency plans and processes that help in preventing, mitigating and controlling environmental damages caused due to the Company's operations.



## EXPORT CONTACT DETAIL

### ▲ PRECISION PARTS BU

Business Development Other Country:

Email: [fineblanking@tii.murugappa.com](mailto:fineblanking@tii.murugappa.com)

Website: [tifineblanking.com](http://tifineblanking.com)

### ◆ DRIVE CHAINS BU

Business Development Other Country:

Email: [Autochains@tii.murugappa.com](mailto:Autochains@tii.murugappa.com)

Add Korea Office details





## TII Locations in India





- ▲ Fine Blanking Business
- ◆ Auto chains Business

## OUR CLIENTELE



**ISUZU**



**BEHR**



General Motors



Powering Business Worldwide



Technik für Automobile



ICF RECRUITMENT 2020  
[ www.mponline.co.in ]



BEST KOKI  
AUTOMOTIVE (P) LTD.



INTEVA  
PRODUCTS

## OUR CLIENTELE

**Schneider**  
Electric



**JOYSON**  
SAFETY SYSTEMS

**OECHSLER**  
Aktiengesellschaft



**ALSTOM**



**RIETER**

**ADIENT**

**IRITES**  
THE INFRASTRUCTURE PEOPLE



**JCB**

**SAN**  
ENGINEERING SOLUTIONS

**SWARAJ**  
**mazda**

**KIA**

**RENAULT**

**BOSCH**

**SCHWING**  
Stetter

**STELLANTIS**

**TVS**

**TVS**

**Lucas TVS**  
DRIVEN



**BAJAJ**

**ROYAL ENFIELD**

**hero**

**SUZUKI**

**HONDA**



# MFPD

Progressing With Metals

QR Code Scanner for  
catalogue and website

TUBE INVESTMENTS OF INDIA LTD.

Post Bag No. 11, M.T.H Road,

Ambattur, Chennai - 600 053.

Tamil Nadu, India.

